



**Series PC - Feature**

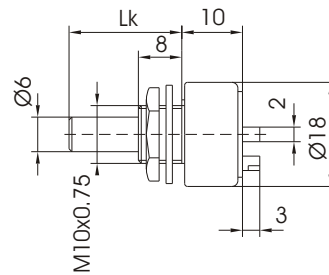
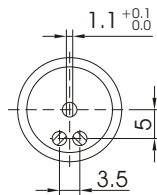
- Closed version
- Resistance tolerance:
  - ±20% for values R 100Ω to 1MΩ
  - ±30% for values R ≥1MΩ to 4.7MΩ
- On special request closer tolerances are available

**Rotary Potentiometers / Ser. PC 6**

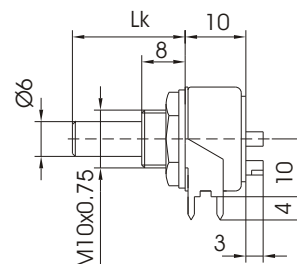
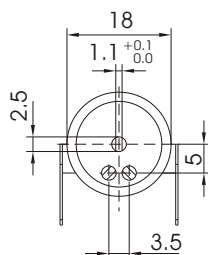
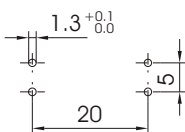
**Technical data**

Rated dissipation at $\vartheta_{amb} = 70^{\circ}\text{C}$	lin 2 W / log 0.5 W
Resistance value range	50 Ω to 4.7MΩ
Nominal voltage	lin 300V - / log 250V -
Electric angle of rotation	$245^{\circ} \pm 10^{\circ}$
Mecanical angle of rotation	$270^{\circ} \pm 10^{\circ}$
Operating torque	5 to 35 mNm
End stop torque	≥700 mNm
Resistance laws (DIN 41450)	lin, log <sup>+</sup> , log <sup>-</sup> , special
Residual resistance (DIN 41450)	lin $\leq 1 \times 10^{-3} R_n$ / non lin $\leq 1 \times 10^{-3} R_n$ / final $\leq 2 \times 10^{-2} R_n$
Temperature range (HSF,DIN 40040)	-55°C to 125°C
Lock nut torque	max 0.8 Nm

**PC6P**

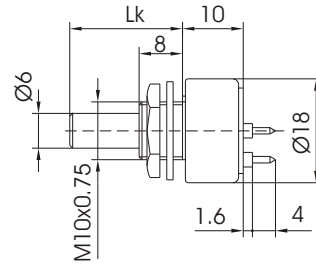
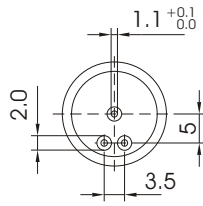
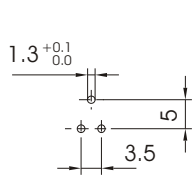


**PC6P-NB**

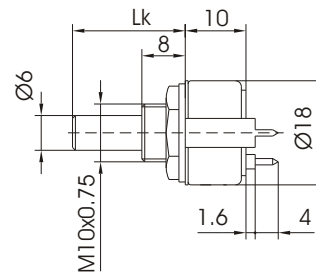
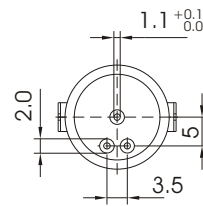
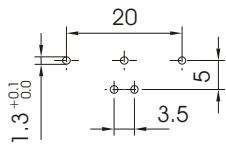




PC7P



PC7P-NA



Ordering Example / Ser. PC 6

<b>PC6P</b>
POT SERIE
PC6P
PC6P

<b>NA</b>
VERSION OF BASE
NA = VERTICAL
NB = HORIZONTAL

<b>6L20F</b>
VERSION
6 = Ø 6mm
L = SHAFT
20 = LENGTH IN mm
F = FLATED

<b>100K</b>
VALUE

<b>2</b>
LAW OF VARIATION
LIN
2 = LOGARIT.
3 = ANTILOG.
4 = SPECIAL

AVAILABLE LENGTHS Lk = 12, 20, 32, 40, 42 mm