



Series PC - Feature

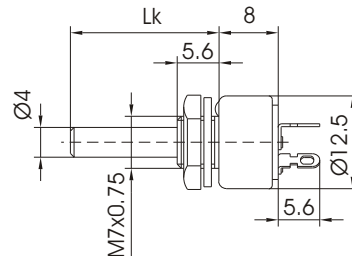
- Closed version
- Resistance tolerance:
 - ±20% for values R 100Ω to 1MΩ
 - ±30% for values R ≥1MΩ to 4.7MΩ
- On special request closer tolerances are available

Rotary Potentiometers / Ser. PC 4

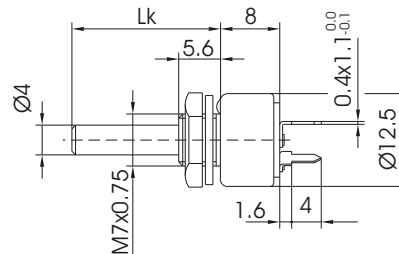
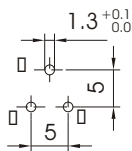
Technical data

Rated dissipation at $\vartheta_{amb} = 70^{\circ}C$	lin 1 W / log 0.5 W
Resistance value range	50 Ω to 4.7MΩ
Nominal voltage	lin 300V - / log 250V -
Electric angle of rotation	$220^{\circ} \pm 10^{\circ}$
Mecanical angle of rotation	$250^{\circ} \pm 10^{\circ}$
Operating torque	5 to 35 mNm
End stop torque	≥700 mNm
Resistance laws (DIN 41450)	lin, log+, log-, special
Residual resistance (DIN 41450)	lin $\leq 1 \times 10^{-3} R_n$ / non lin $\leq 1 \times 10^{-3} R_n$ / final $\leq 2 \times 10^{-2} R_n$
Temperature range (HSF,DIN 40040)	-55°C to 125°C
Lock nut torque	max 0.4 Nm

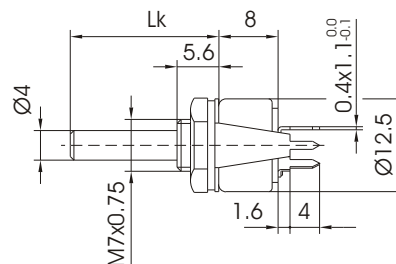
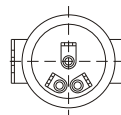
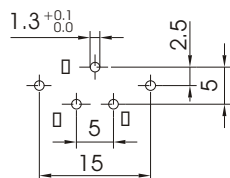
PC4P



PC5P

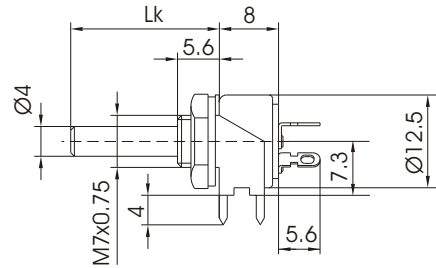
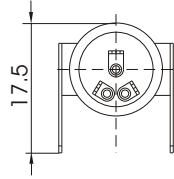
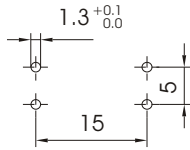


PC5PNA





PC4NB



Ordering Example / Ser. PC 4

PC4

POT SERIE
PC4
PC5

NA

VERSION OF BASE
NA = VERTICAL
NB = HORIZONTAL

4L20F

VERSION
4 = Ø 4mm
L = SHAFT
20 = LENGTH IN mm
F = FLATED

100K

--

2

LAW OF VARIATION
LIN
2 = LOGARIT.
3 = ANTILOG.
4 = SPECIAL

AVAILABLE LENGTHS Lk = 12, 20, 32, 40, 42 mm