



**Series P11M - Feature**

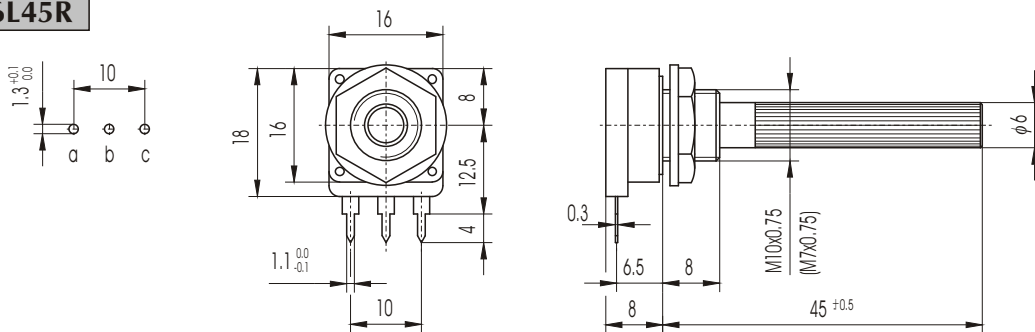
- Closed version
- Modular design
- Allowing up to four potentiometers on the same plastic spindle
- A switch can be connected to any model
- Resistance tolerance:
  - ±20% for values 100Ω to 1MΩ
  - ±30% for values > 1MΩ to 4.7MΩ
- On special request closer tolerances are available

**Modular Rotary Operated Types / Ser. P11M / 16 mm**

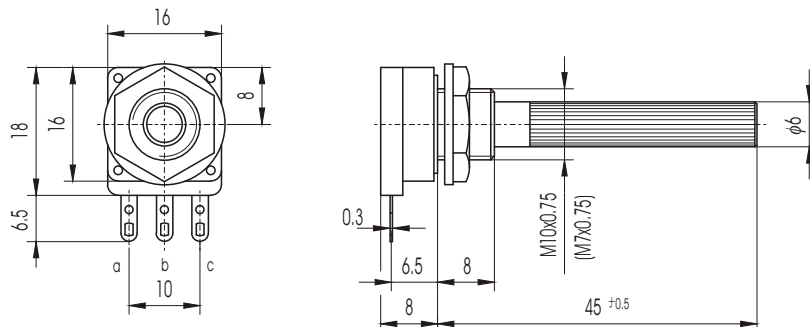
**Technical data**

Rated dissipation at $\vartheta_{amb} = 40^{\circ}\text{C}$	lin 0.25W / other 0.125W
Resistance value range	lin 100Ω to 4.7MΩ / log 2.2kΩ to 2.5MΩ
Nominal voltage	lin 500V / other 250V
Electric angle of rotation	$260^{\circ} \pm 20^{\circ}$
Mecanical angle of rotation	$300^{\circ} \pm 5^{\circ}$
Operating torque	5 to 25 mNm
End stop torque	≥ 400 mNm
With supplied mounting nut max.torque for tightening	max 800 mNm
Resistance laws (DIN 41450)	lin, log +, log -, special
Residual resistance (DIN 41450)	lin $\leq 1 \times 10^{-3} R_n$ / non lin $\leq 1 \times 10^{-3} R_n$ / final $\leq 2 \times 10^{-2} R_n$
Temperature range (HSF,DIN 40040)	-25°C to 70°C
Switch rating	250 V <sub>ac</sub> , 1 A
Lock nut torque	max 0.8Nm

**P11M10AP6L45R**



**P11M10BP6L45R**



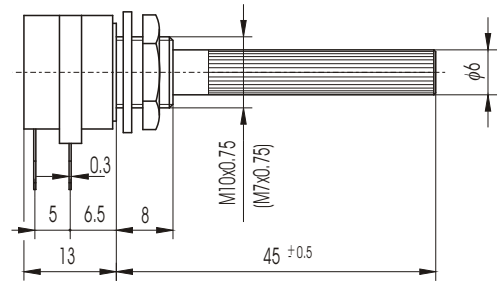
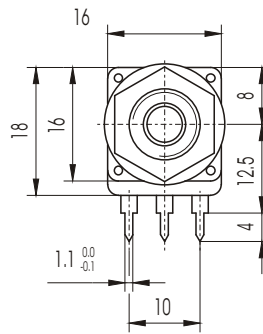
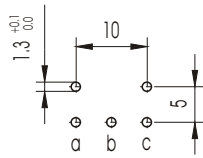


**Iskra**

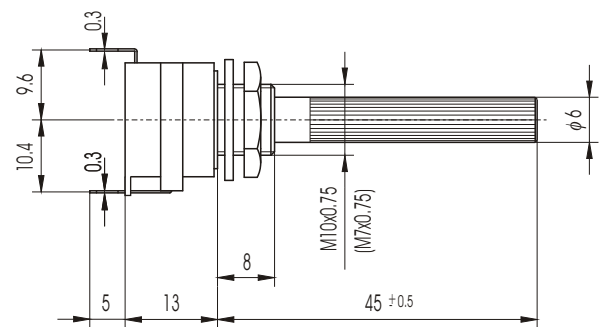
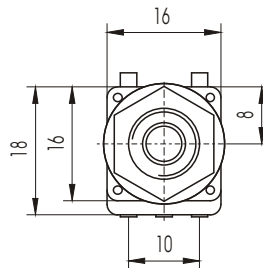
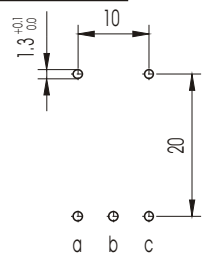
Iskra MIS d.d.

Rotary Operated Pots/Ser. P11M

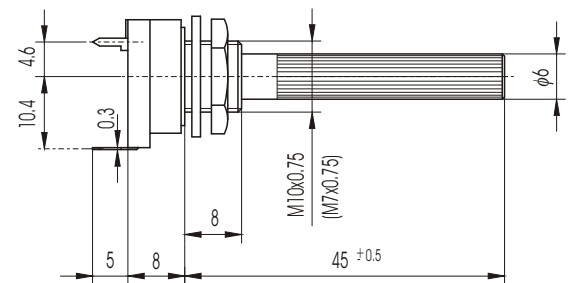
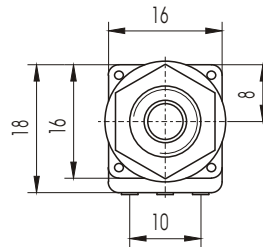
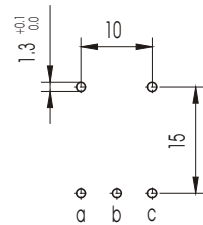
**P11M10AP6L45RS**



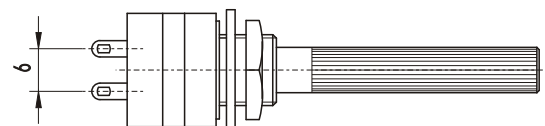
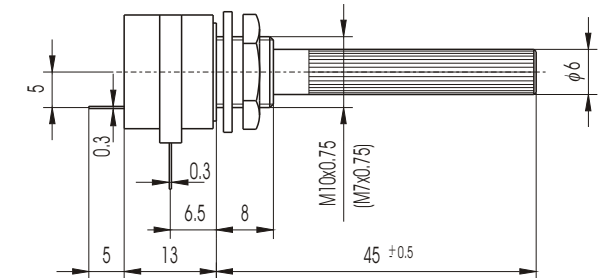
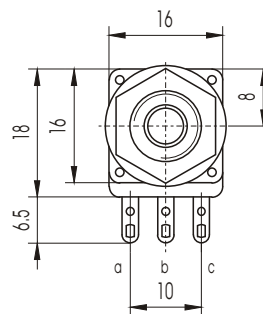
**P11M10AVP6L45RS**



**P11M10AVP6L45R**

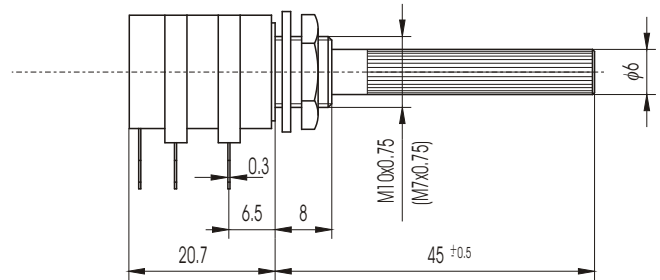
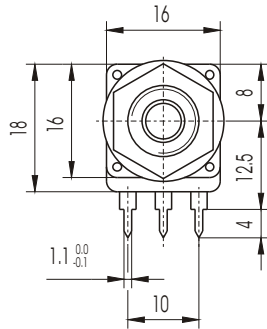
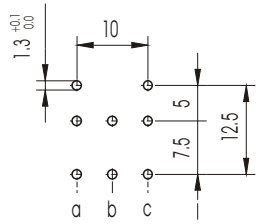


**P11M10BP6L45RSU**

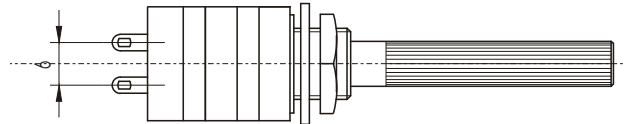
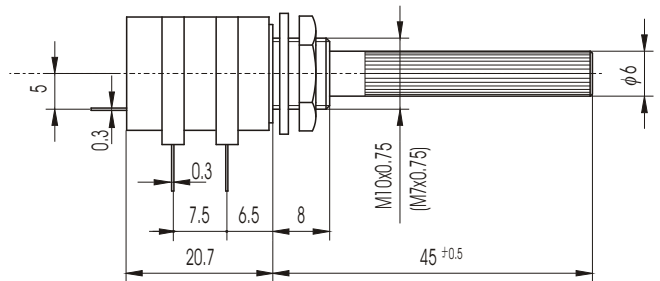
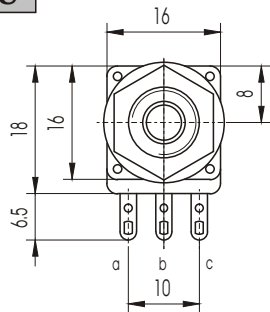




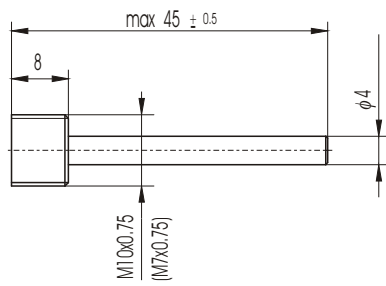
P11M10AP6L45RCS



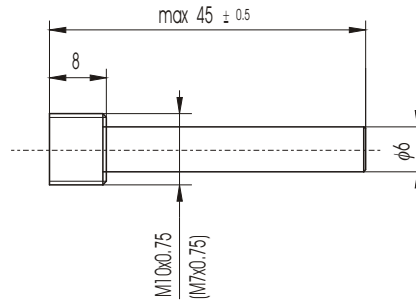
P11M10BP6L45RCSU



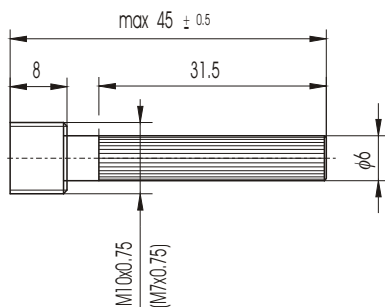
SHAFT



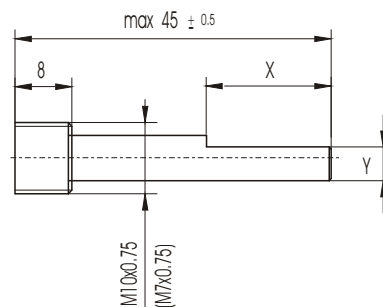
Standard plastic (metal) shafts P4



Standard plastic shafts P6



Standard plastic shafts P6R



Standard plastic shafts P6F



Ordering Example / Ser. P11M / 16 mm

